

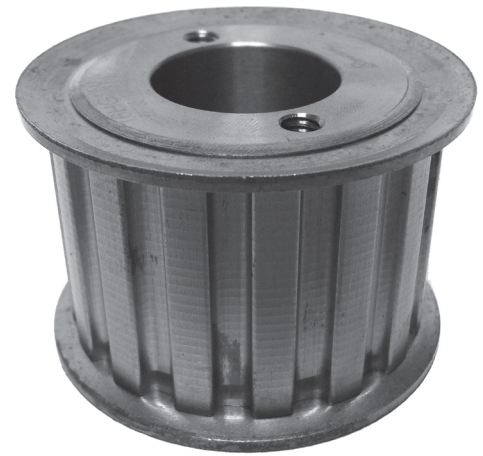
H TIMING PULLEYS

0.500" Trapezoidal Pitch

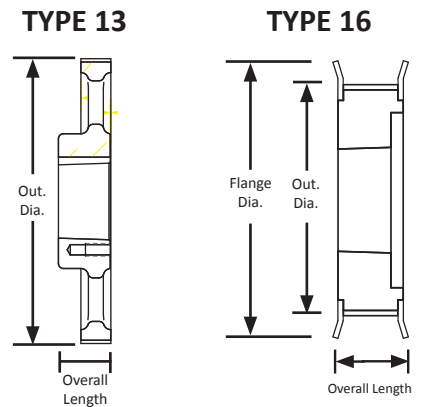
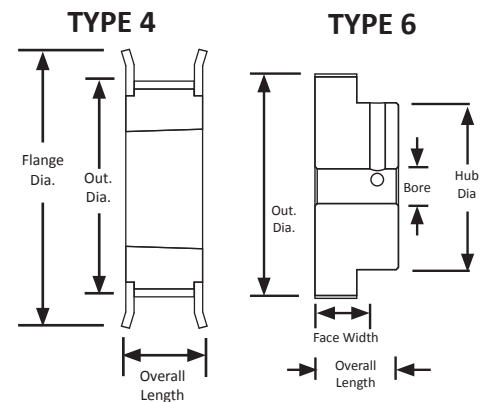
For 1.5" Wide Belts

Steel/Iron

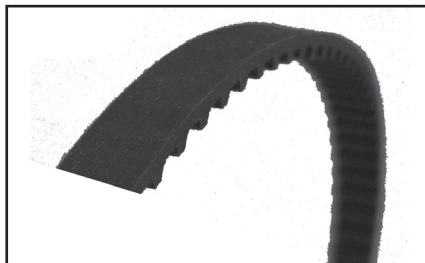
Split Taper Bore



Part Number	No. of Teeth	Type	Pitch Dia. (in)	Out. Dia. (in)	Flange Dia. (in)	Bushing	Face Width (in)	Overall Length (in)
14HG150	14	4	2.228	2.174	2.438	G	1.750	2.375
16HG150	16	4	2.548	2.492	2.875	G	1.750	2.375
18HH150	18	4	2.865	2.811	3.125	H	1.750	2.375
20HH150	20	4	3.183	3.129	3.375	H	1.750	2.375
22HH150	22	16	3.501	3.447	3.813	H	1.750	1.938
22HP150	22	6	3.501	3.447	3.813	P1	1.750	2.625
24HH150	24	16	3.820	3.768	4.063	H	1.750	1.938
24HP150	24	6	3.820	3.766	4.063	P1	1.750	2.625
26HH150	26	16	4.138	4.084	4.375	H	1.750	1.938
26HP150	26	6	4.138	4.084	4.375	P1	1.750	2.625
28HH150	28	16	4.456	4.402	4.688	H	1.750	1.938
28HP150	28	6	4.456	4.402	4.688	P1	1.750	2.625
30HH150	30	7	4.775	4.721	5.000	H	1.750	1.938
30HP150	30	7	4.775	4.721	5.000	P1	1.750	2.625
32HQ150	32	7	5.093	5.039	5.313	Q1	1.750	2.781
36HQ150	36	7	5.730	5.676	6.000	Q1	1.750	2.781
40HQ150	40	7	6.386	6.312	8.563	Q1	1.750	2.781
44HQ150	44	7	7.003	6.949	7.250	Q1	1.750	2.781
48HQ150	48	7	7.839	7.585	7.875	Q1	1.750	2.781
60HQ150	60	13	9.549	9.495	-	Q1	1.750	2.781
72HQ150	72	13	11.459	11.405	-	Q1	1.750	2.781
84HQ150	84	13	13.369	13.315	-	Q1	1.750	2.781
96HQ150	96	13	15.279	15.225	-	Q1	1.750	2.781
120HQ150	120	13	19.099	19.045	-	Q1	1.750	2.781
156HQ150	156	13	24.828	24.774	-	Q1	1.750	2.781



For matching Split Taper bushings,
see page 374.



For matching H pitch belts,
see page 199.